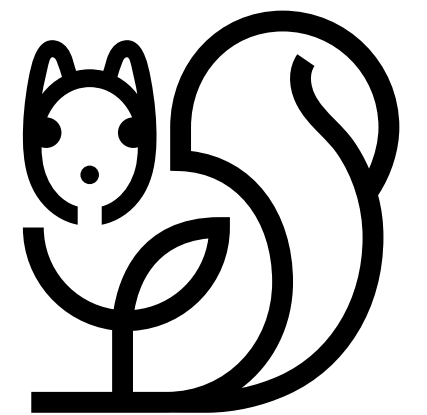


TotalEnvironment
Homes

L20v1



TotalEnvironment
Homes



What is L20?

L20 is a three bedroom home with a terrace garden.

There is an entrance lobby, three bedrooms with attached bathrooms, a spacious living-dining, a home office, a kitchen and a maid's bathroom. And, of course, a garden with a deck. The total built-up area is 1,904 sq. ft.



L20v1



| Contents | |
|-----------------------------|----|
| Home Specifications | 1 |
| Terrace Garden | 2 |
| Axonometric Views | 9 |
| L20v1a Even Level Unit Plan | 13 |
| L20v1b Odd Level Unit Plan | 14 |
| Home Spaces and Features | 16 |
| Contact | 30 |



Home Specifications

3 Bedrooms

Open plan Kitchen-Dining

Terrace Garden

Deck Area

Home Office

| | |
|----------------|---------------|
| Carpets Area | 1,445 sq. ft. |
| Outdoor Spaces | 258 sq. ft. |
| Built-up Area | 1,904 sq. ft. |

Visualization of **Guest Bedroom**
This render depicts the fully furnished product (different from green, blue and purple specifications)

Terrace Garden

Connection with nature

Double-height terrace gardens

Large sliding glass doors lead to the deck and garden areas. The living room and the terrace garden outside seem like a single space. The deck provides an open yet warm seating area for use all day long.



Disclaimer

All information provided here, including but not limited to drawings, visualizations, renderings, master plan, floor plans, trees, landscape, images, and other elements are only indicative and will likely change in the final, as-built development. The visualizations & renderings provided in here are general in nature and are indicative of the project at a mature stage at a much later date in time.

All dimensions, measurements and other square footages are approximate and should not be relied upon for any purpose. All plans are subject to change and may not include all elements, improvements or other renderings shown.

An image is only as relevant as the value it communicates. An image brings a reality to our Homes that words cannot.

All photographic images in this brochure, unless otherwise specified, are actual photos taken at the Property, the Experience Home, and at current or completed projects of Total Environment.



L20v1

Comprising of 1,904 sq. ft. built-up area, this Home has a **wire-cut brick** exterior. Besides being beautiful, wire-cut bricks are natural and gain character over time. This layout offers visual access to the garden from all key areas and keeps the home **connected** to the **greens** outside.

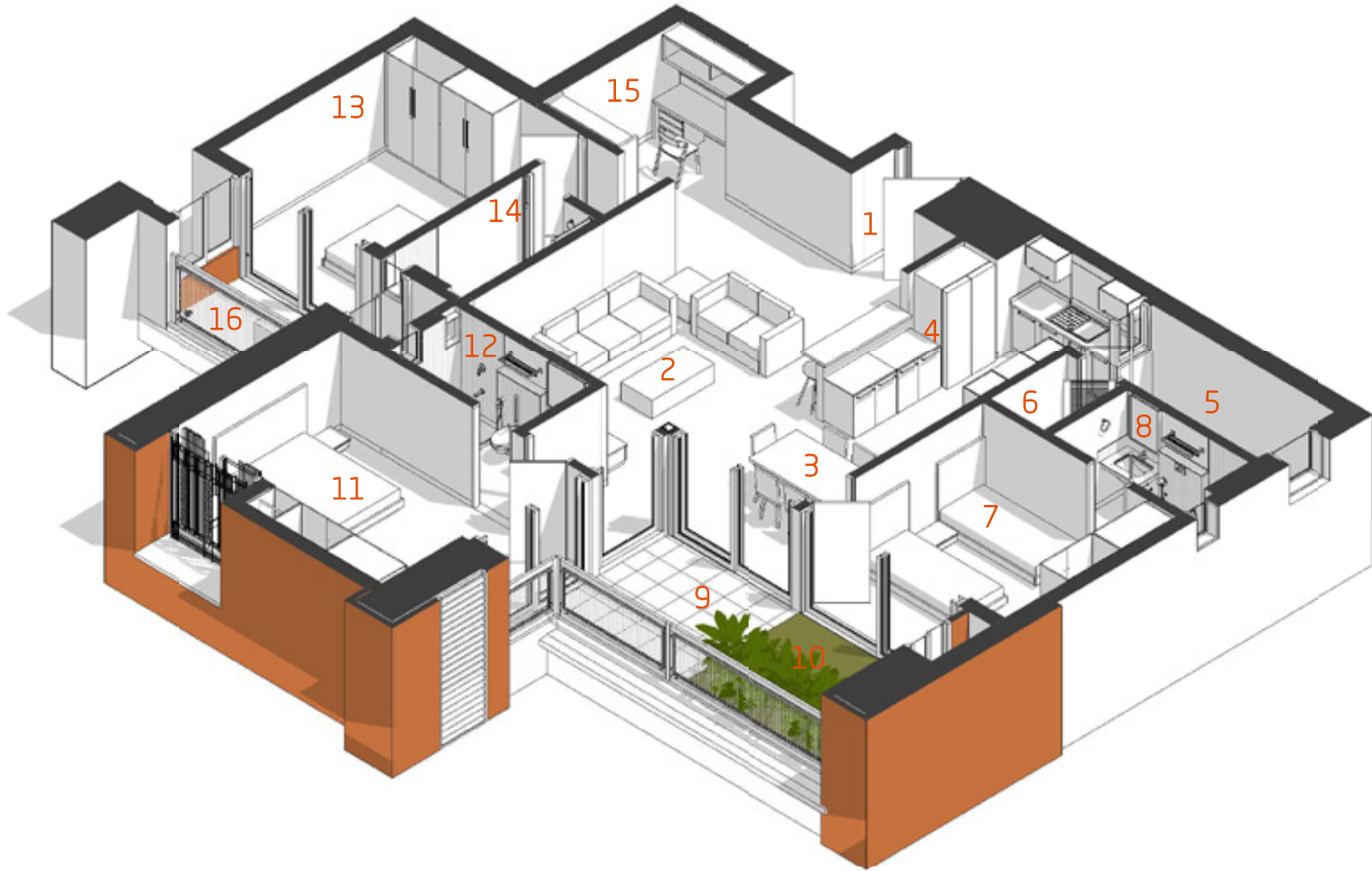
Legend

| | Room | Size |
|----|---------------------|---------------|
| 01 | Entrance Lobby | 15'6" x 6'5" |
| 02 | Living | 13'9" x 14'1" |
| 03 | Dining | 12'0" x 9'2" |
| 04 | Kitchen | 11'7" x 10'6" |
| 05 | Utility | 12'6" x 5'3" |
| 06 | Maid's Bathroom | 3'6" x 5'1" |
| 07 | Children's Bedroom | 13'1" x 11'8" |
| 08 | Children's Bathroom | 8'3" x 5'1" |

| | Room | Size |
|----|------------------|---------------|
| 9 | Deck | 9'0" x 8'2" |
| 10 | Terrace Garden | 11'3" x 8'2" |
| 11 | Master Bedroom | 16'6" x 13'3" |
| 12 | Master Bathroom | 8'10" x 4'10" |
| 13 | Guest Bedroom | 11'4" x 13'3" |
| 14 | Common Bathroom | 4'11" x 8'9" |
| 15 | Home Office | 6'0" x 9'5" |
| 16 | Service Platform | 11'5" x 4'3" |

| | |
|----------------|---------------|
| Carpet Area | 1,445 sq. ft. |
| Outdoor Spaces | 258 sq. ft. |
| Built-up Area | 1,904 sq. ft. |

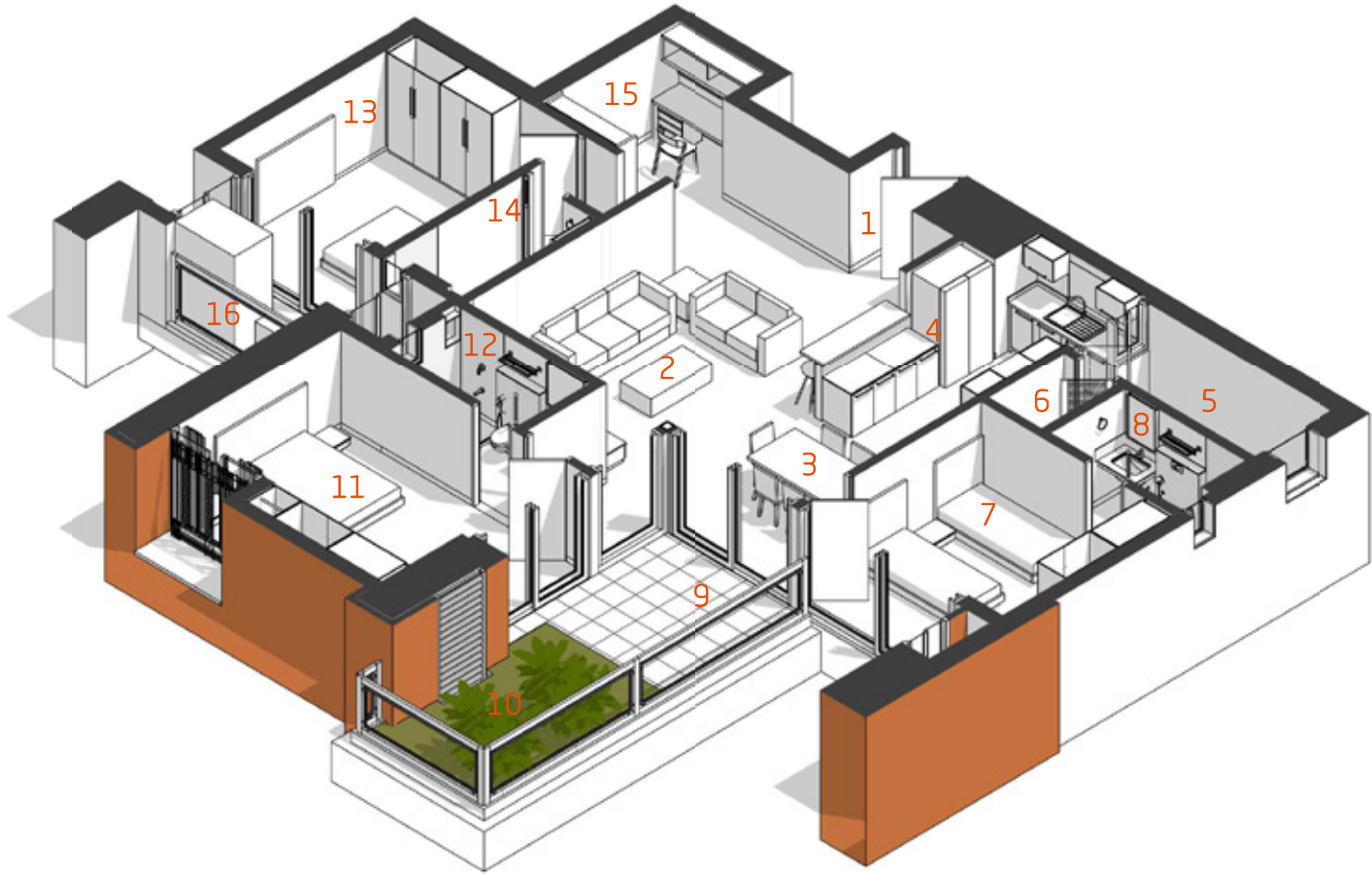
Axonometric View



L20v1a
Even Level

All plans may not include every element, material, furniture and fixture shown in the photographs.
Please refer to the Specifications Section for more information.

Axonometric View



L20v1b
Odd Level

Legend

| | Room | Size |
|----|---------------------|---------------|
| 01 | Entrance Lobby | 15'6" x 6'5" |
| 02 | Living | 13'9" x 14'1" |
| 03 | Dining | 12'0" x 9'2" |
| 04 | Kitchen | 11'7" x 10'6" |
| 05 | Utility | 12'6" x 5'3" |
| 06 | Maid's Bathroom | 3'6" x 5'1" |
| 07 | Children's Bedroom | 13'1" x 11'8" |
| 08 | Children's Bathroom | 8'3" x 5'1" |

| | Room | Size |
|----|------------------|---------------|
| 9 | Deck | 9'5" x 9'5" |
| 10 | Terrace Garden | 8'4" x 12'7" |
| 11 | Master Bedroom | 16'6" x 13'3" |
| 12 | Master Bathroom | 8'10" x 4'10" |
| 13 | Guest Bedroom | 11'4" x 13'3" |
| 14 | Common Bathroom | 4'11" x 8'9" |
| 15 | Home Office | 6'0" x 9'5" |
| 16 | Service Platform | 11'5" x 4'3" |

| | |
|----------------|---------------|
| Carpet Area | 1,445 sq. ft. |
| Outdoor Spaces | 271 sq. ft. |
| Built-up Area | 1,915 sq. ft. |

Legend

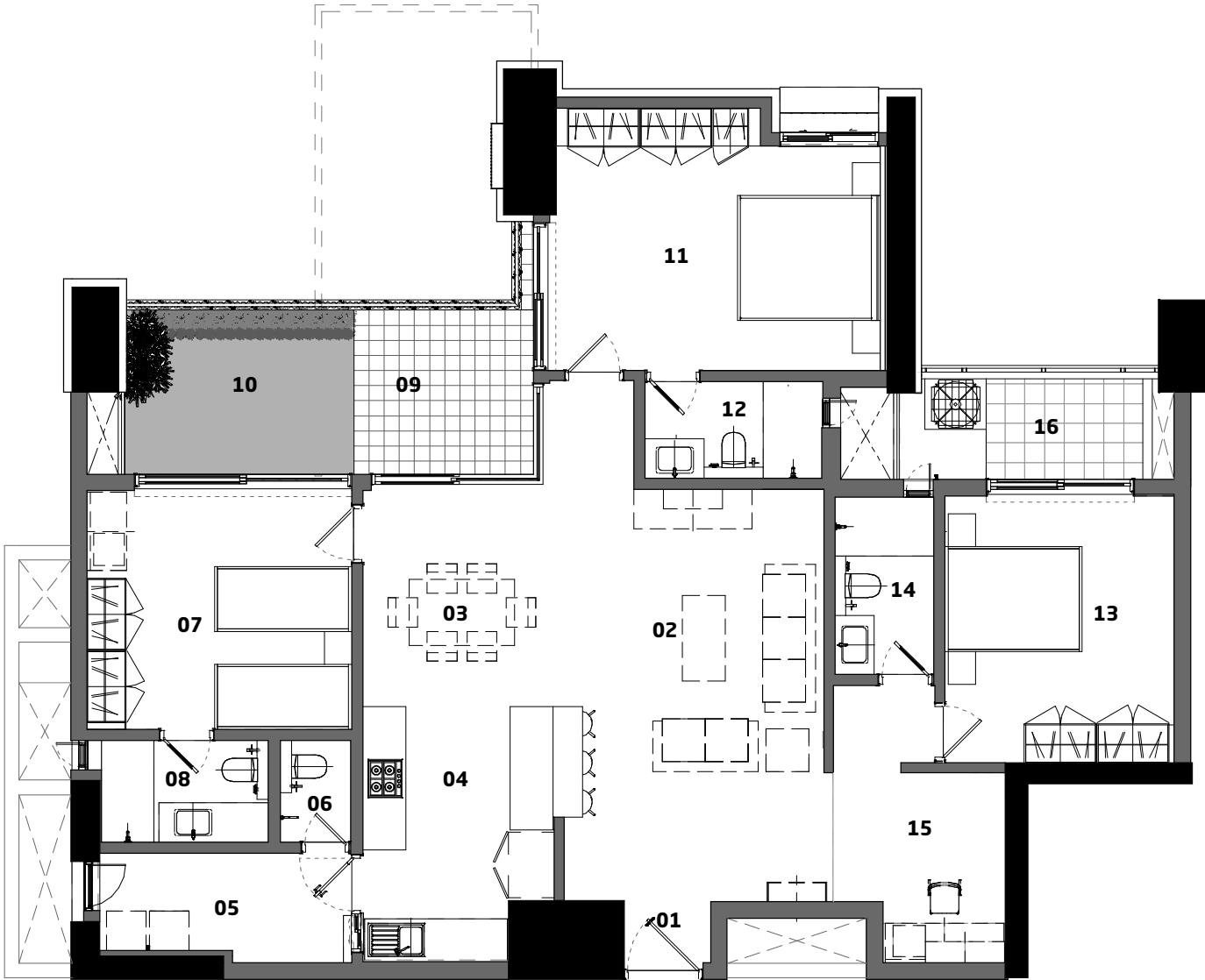
| | Room | Size |
|----|---------------------|---------------|
| 01 | Entrance Lobby | 15'6" x 6'5" |
| 02 | Living | 13'9" x 14'1" |
| 03 | Dining | 12'0" x 9'2" |
| 04 | Kitchen | 11'7" x 10'6" |
| 05 | Utility | 12'6" x 5'3" |
| 06 | Maid's Bathroom | 3'6" x 5'1" |
| 07 | Children's Bedroom | 13'1" x 11'8" |
| 08 | Children's Bathroom | 8'3" x 5'1" |

| | Room | Size |
|----|------------------|---------------|
| 9 | Deck | 9'0" x 8'2" |
| 10 | Terrace Garden | 11'3" x 8'2" |
| 11 | Master Bedroom | 16'6" x 13'3" |
| 12 | Master Bathroom | 8'10" x 4'10" |
| 13 | Guest Bedroom | 11'4" x 13'3" |
| 14 | Common Bathroom | 4'11" x 8'9" |
| 15 | Home Office | 6'0" x 9'5" |
| 16 | Service Platform | 11'5" x 4'3" |

| | |
|----------------|---------------|
| Carpet Area | 1,445 sq. ft. |
| Outdoor Spaces | 258 sq. ft. |
| Built-up Area | 1,904 sq. ft. |

L20v1a | Even Level

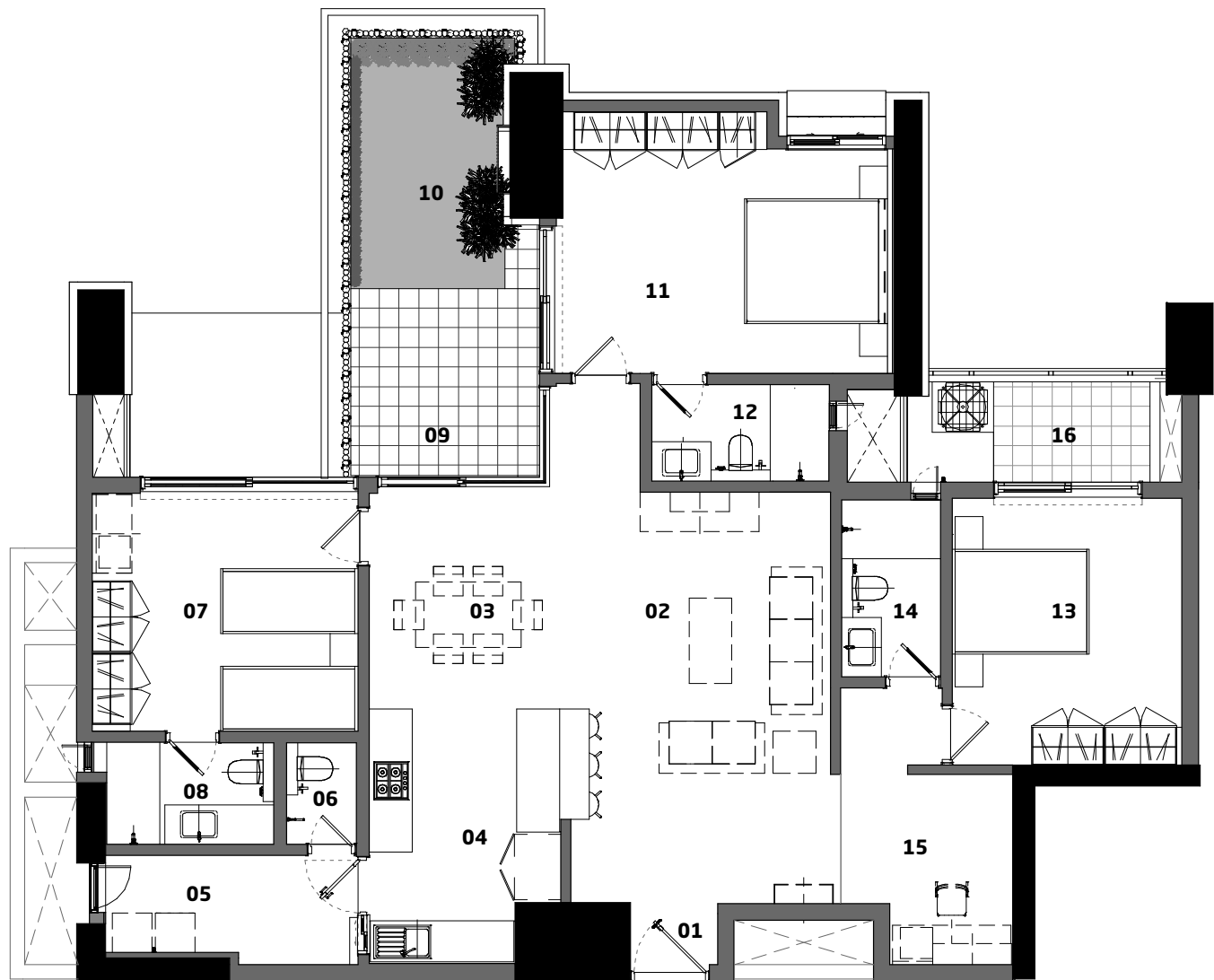
Custom Floor Plan



All plans may not include every element, material, furniture and fixture shown in the photographs. Please refer to the Specifications Section for more information.

L20v1b | Odd Level

Custom Floor Plan



Legend

| | Room | Size |
|----|---------------------|---------------|
| 01 | Entrance Lobby | 15'6" x 6'5" |
| 02 | Living | 13'9" x 14'1" |
| 03 | Dining | 12'0" x 9'2" |
| 04 | Kitchen | 11'7" x 10'6" |
| 05 | Utility | 12'6" x 5'3" |
| 06 | Maid's Bathroom | 3'6" x 5'1" |
| 07 | Children's Bedroom | 13'1" x 11'8" |
| 08 | Children's Bathroom | 8'3" x 5'1" |

| | Room | Size |
|----|------------------|---------------|
| 9 | Deck | 9'5" x 9'5" |
| 10 | Terrace Garden | 8'4" x 12'7" |
| 11 | Master Bedroom | 16'6" x 13'3" |
| 12 | Master Bathroom | 8'10" x 4'10" |
| 13 | Guest Bedroom | 11'4" x 13'3" |
| 14 | Common Bathroom | 4'11" x 8'9" |
| 15 | Home Office | 6'0" x 9'5" |
| 16 | Service Platform | 11'5" x 4'3" |

| | |
|----------------|---------------|
| Carpet Area | 1,445 sq. ft. |
| Outdoor Spaces | 271 sq. ft. |
| Built-up Area | 1,915 sq. ft. |

Kitchen-Dining

- 1

Kitchen
- 2

Dining

Spaces shown in visualization

The interior finishes combine smooth and rough materials that create unexpected and delightful interplays of hues and textures. All spaces can be furnished, fitted out and handed over in a ready-to-occupy condition.

Features

- a

Flooring

Imported marble flooring
- b

Furniture

Customizable furniture
- c

Kitchen cabinets

Veneer finish
- d

Kitchen countertop

Granite

All plans may not include every element, material, furniture and fixture shown in the photographs. Please refer to the Specifications Section for more information.



Specifications

L20v1

| STRUCTURE | | Green | Blue | Purple |
|---------------------|------------------------------------------------------------------------------------------------------------------------------------------------------------------------------------------------------------------------------------------------------------------------------------------------------|-------|------|--------|
| Shell | RCC frame structure with a height of 9'10" from slab top to slab top, except in the case of sloped or curved roofs | ● | ● | ● |
| Masonry | High quality exposed brick masonry using specially procured high-strength terracotta wire-cut bricks and / or stone masonry for parts of the exterior with deep-set waterproof pointing. All other masonry in terracotta blocks, table moulded brick, Aerocon blocks or concrete blocks with plaster | ● | ● | ● |
| FLOORING & DADO | | | | |
| Living & Dining | Kota stone or equivalent finished with 8 coats polish | ● | | |
| | Beige coloured imported marble finished with 8 coats polish | | ● | ● |
| Kitchen | Udaipur green marble flooring & counter with glazed tile dado above the counter up to a height of 1'8" | ● | | |
| | Beige coloured imported marble finished with 8 coats polish on the floor. Granite counter with glazed tile dado above the counter up to a height of 1'8" | | ● | ● |
| Utility / Laundry | Udaipur green marble flooring. No dado or counter | ● | ● | ● |
| Deck / Outdoor | Terracotta Tiles | ● | | |
| | Tandoor Stone | | ● | |
| | Hardwood / Engineered Solid Wood, finished with oil | | | ● |
| Master Bedroom | Kota stone or equivalent finished with 8 coats polish | ● | ● | |
| | White oak or equivalent hardwood flooring | | | ● |
| Master Bathroom | Udaipur green marble or equivalent on the floor and counter, glazed tile dado on the walls up to 7' in shower area. Acrylic distemper or equivalent washable paint with skirting in dry area | ● | | |
| | Beige coloured imported marble with 8 coats polish on floor and counter, glazed tile dado on the walls up to 7' in shower area. Acrylic distemper or equivalent washable paint with skirting in dry area | | ● | ● |
| Children's Bedroom | Kota stone or equivalent finished with 8 coats polish | ● | ● | |
| | White oak or equivalent hardwood flooring | | | ● |
| Children's Bathroom | Udaipur green marble or equivalent on the floor and counter, glazed tile dado on the walls up to 7' in shower area. Acrylic distemper or equivalent washable paint with skirting in dry area | ● | | |
| | Indian Pink marble or equivalent on the floor and counter, glazed tile dado on the walls up to 7' in shower area. Acrylic distemper or equivalent washable paint with skirting in dry area | | ● | |
| | Beige coloured imported marble with 8 coats polish on floor and counter, glazed tile dado on the walls up to 7' in shower area. Acrylic distemper or equivalent washable paint with skirting in dry area | | | ● |



Exposed brick



Botticino italian marble



Kota stone



Hardwood deck

These reference images showcase options for specific products and finishes.



Bathroom fittings



Plunge pool



Wash basin

These reference images showcase options for specific products and finishes.

Specifications

L20v1

| FLOORING & DADO | | Green | Blue | Purple |
|-----------------------------------|----------------------------------------------------------------------------------------------------------------------------------------------------------------------------------------------------------------------------------------------------------------------------------|-------|------|--------|
| Guest Bedroom | Kota stone or equivalent finished with 8 coats polish | ● | ● | ● |
| Guest Bathroom | Udaipur green marble or equivalent on the floor and counter, glazed tile dado on the walls up to 7" in shower area. Acrylic distemper or equivalent washable paint with skirting in dry area | ● | ● | ● |
| Home Office | Kota stone or equivalent finished with 8 coats polish | ● | | |
| | Beige coloured imported marble finished with 8 coats polish | | ● | |
| | Hardwood / Engineered Solid Wood, finished with oil | | | ● |
| | | | | |
| Maid's Bathroom | Udaipur Green Marble or equivalent on the floor, glazed tile dado on the walls up to 7' | ● | ● | ● |
| Service Platform / Equipment Room | IPS Flooring | ● | ● | ● |
| SANITARY AND PLUMBING | | | | |
| Water Closets | Porcelain EWC of Kohler or equivalent in all bathrooms | ● | ● | ● |
| Health Faucets | Health faucet of Jaquar or equivalent in all bathrooms | ● | ● | ● |
| Wash Basins | Porcelain wash basin of Kohler or equivalent shall be provided in all bathrooms | ● | ● | ● |
| Kitchen Sink | Single bowl stainless steel sink with drain board | ● | ● | ● |
| Cockroach / Floor Traps | A detachable stainless steel cockroach trap with lid of Chilly or equivalent in all bathrooms and utility | ● | ● | ● |
| Shower Area | Glass partition with door for the shower area in the Master bathroom | | | ● |
| Overhead Showers | 3" dia shower head of Grohe or equivalent in all bathrooms | ● | ● | ● |
| | One Rain shower of Grohe or equivalent in the Master bathroom | | | ● |
| Hand Showers | Hand shower of Grohe or equivalent in the Master bathroom | | | ● |
| Spout | CP finish of Grohe or equivalent in shower area of all bathrooms | ● | ● | ● |
| Basin Mixer | CP finish of Grohe or equivalent in all bathrooms | ● | ● | ● |
| Bath Accessories | Towel rings, toilet paper holders, towel rod and soap dish in Master, Children's and Guest Bathrooms - all of Grohe or equivalent | | ● | ● |
| Washing Machine Point | One cold water inlet and drainage outlet for a washing machine in the utility | ● | ● | ● |
| Plumbing | | | | |
| | Internal water supply lines and drainage lines in uPVC pipes. Hot water lines in cPVC pipes. Sewage lines in PVC pipes. Provision for centralized hot water connection to the shower and wash basin in each bathroom [except for maid's bathroom] and to the sink in the kitchen | ● | ● | ● |

Specifications

L20v1

| | ELECTRICAL | Green | Blue | Purple |
|--------------------|------------------------------------------------------------------------------------------------|-------|------|--------|
| Wiring | All wiring of Anchor or equivalent, concealed in PVC conduit pipes | ● | ● | ● |
| Switches & Sockets | All switches of Crabtree or equivalent | ● | ● | ● |
| | Apart from the basic light and fan controls, the following number of sockets in various rooms: | | | |
| Living / Dining | 3 nos. - 5 amp switch & socket | ● | ● | ● |
| Kitchen | 3 nos. - 5 amp switch & socket, 4 no.s - 15 amp switch and socket | ● | ● | |
| | 3 nos. - 5 amp switch & socket, 5 no.s - 15 amp switch and socket | | | ● |
| Utility | 1 no. -5 amp switch & socket, 1 no. -15 amp switch and socket | ● | ● | ● |
| Master Bedroom | 2 nos. - 5 amp switch & socket | ● | ● | |
| | 4 nos. - 5 amp switch & socket | | | ● |
| Other Bedrooms | 2 nos. - 5 amp switch & socket | ● | ● | ● |
| Bathrooms | 1 no. - 5 amp switch & socket | ● | ● | ● |
| Maid's Bathroom | 1 no. - 5 amp switch & socket | ● | ● | ● |
| Home Office | 2 nos. - 5 amp switch & socket | ● | ● | |
| | 4 nos. - 5 amp switch & socket | | | ● |
| Telephone | 1 Telephone Point each in living and master bedroom | ● | ● | ● |
| | 1 Telephone Point in home office | | | ● |
| Entertainment | 1 Television Point in living | ● | ● | ● |
| Light Fixtures | Light fixtures in the home | | | |
| Power & Back-up | Power connection of 3 KVA with back-up power from Diesel Generator | ● | | |
| | Power connection of 5 KVA with back-up power from Diesel Generator | | ● | ● |



Mosquito screen



Composite fenestration system



Door stopper

These reference images showcase options for specific products and finishes.



Electric chimney



Biometric lock



Curtain control



Panic button



Occupancy sensor



Microwave and Oven

Specifications

L20v1

| FENESTRATION | | Green | Blue | Purple |
|----------------------------|------------------------------------------------------------------------------------------------------------------------------------------------------------------------------------------------------------------------------------------------------------------------------------------------------------------------------------------------------------------------------------------|-------------|-------------|-------------|
| Frames & Shutters | Door and window frames in engineered timber and clad externally with extruded powder coated aluminium with the help of thermally broken nylon clips. All flush door shutters in natural wood veneer with core of block board. All bathroom windows, external utility fenestration, maid's room door and window in aluminium extruded frames with clear or frosted glass | <div></div> | <div></div> | <div></div> |
| Mosquito Screens | Mosquito screens for all the External Windows and French Windows except for bathroom windows | | | <div></div> |
| Window Grilles | No window grilles shall be provided for the French Windows. Grilles shall be provided only for windows where there is a sheer drop [atleast two floors]. No grilles for bathroom windows | <div></div> | <div></div> | <div></div> |
| Hardware | All hardware in stainless steel brush finished. The main door with a night latch of Godrej or equivalent | <div></div> | <div></div> | <div></div> |
| | Main door with a night latch of Godrej or equivalent brand, Other doors with tower bolts and a mortise lock with handle or tubular/ cylindrical lock. All outward casement glass windows fitted with SS friction stays. Magnetic/ concealed door stoppers for the Main door and Bed room doors. French Windows with lift and slide system, Sliding window with multipoint lock/star lock | <div></div> | <div></div> | <div></div> |
| PAINT | | | | |
| Frames & Shutters | No external paint over exposed brick or stone masonry. Cement based paint for other areas. Any steel railings etc. with a zinc-chromate primer and synthetic enamel paint | <div></div> | <div></div> | <div></div> |
| | All internal paint in Acrylic Distemper | <div></div> | <div></div> | <div></div> |
| ELECTRO-DOMESTIC EQUIPMENT | | | | |
| Hob | 4-burner stainless steel finish cooking hob in the Kitchen | | <div></div> | <div></div> |
| Chimney | Ductable electric chimney stainless steel finish with anodized aluminium filters in the Kitchen | | <div></div> | <div></div> |
| Dishwasher | Dishwasher of Siemens or equivalent in the Kitchen | | <div></div> | <div></div> |
| Microwave | Microwave of Siemens or equivalent in the Kitchen | | | <div></div> |
| Oven | Oven of Siemens or equivalent in the Kitchen | | | <div></div> |
| Refrigerator | Refrigerator in Kitchen | | | |
| Water Purifier | RO unit | | <div></div> | <div></div> |
| Heat Pump | 1.08 KW centralised heat pump with 160 litres storage tank | <div></div> | <div></div> | <div></div> |

Specifications

L20v1

| HOME AUTOMATION | | Green | Blue | Purple |
|-----------------------|-------------------------------------------------------------------------------------------------------------------------------------------|-------|------|--------|
| Security / Safety | Biometric main door lock with additional control from smart phone app | | | ● |
| | Colour door camera with call bell facility outside the main door | | | ● |
| | Surface mounted siren and auto dialler [1 No.] | | | ● |
| | Panic buttons [4 Nos.] at entrance lobby and bathrooms to raise alarm in case of emergency | | | ● |
| | Pet immune motion sensors [2 Nos.] in living and garden area for detecting intrusions | | | ● |
| | Magnetic sensors in all windows, French windows and main door | | | ● |
| Entertainment | Gas leak detector and heat detector in the kitchen | | | ● |
| | Mood Lighting and Media Integration | | | |
| Comfort / Convenience | AC Integration | | | |
| | Curtain Motor with remote control for curtains in the living area | | | |
| Green Controls | Occupancy sensors in master bathroom, children's bathroom and guest bathrooms | | | ● |
| CABINETRY & FURNITURE | | | | |
| Living & Dining | Console unit with white ash finish in dining area. No crockery unit | | | ● |
| Kitchen | Floor & wall mounted cabinets in veneer finish | | ● | ● |
| Master Bedroom | King size bed with head board and bed side tables in white ash finish, 2.5 module wardrobe with plain veneer shutters in white ash finish | | ● | ● |
| Master Bathroom | Wall mounted mirror with wooden frame in teak finish | | | ● |
| | Under counter cabinet in teak finish | | | ● |
| Children's Bedroom | Two single beds with head board and a bed side table, 2 module wardrobe with plain veneer shutters in white ash finish | | ● | ● |
| Children's Bathroom | Wall mounted mirror with wooden frame in teak finish | | | ● |
| Guest Bedroom | Queen size bed with head board and bed side tables , 2 module wardrobe with plain veneer shutters in white ash finish | | ● | ● |
| Guest Bathroom | Wall mounted mirror with wooden frame in teak finish | | | ● |
| Home Office | Study table with pedestal along with two overhead shelves in teak finish | | | ● |



Switchboard



Soft-close drawer channels



Cooking hob



Trouser rack

These reference images showcase options for specific products and finishes.



Wardrobes



Double bed and Cabinetry



Landscaped garden area

These reference images showcase options for specific products and finishes.

Specifications

L20v1

| CABINETRY & FURNITURE | | Green | Blue | Purple |
|----------------------------------------------------|-----------------------------------------------------------------------------------------------------------------------------------------------------|-------|------|--------|
| No cabinetry shall be provided in any other spaces | | | | |
| Basic Materials | All woodwork and modular units in termite resistant good quality plywood or MDF panels in natural veneer or laminate | | ● | ● |
| Brand | All woodwork, unless specifically mentioned otherwise, shall be made at our in-house production facility from our proprietary furniture design line | | ● | ● |
| Hardware | All hardware in stainless steel brush finished of Hettich or equivalent | | ● | ● |
| | Soft close silent drawer system in wardrobes and study units of Hettich or equivalent | | ● | ● |
| Mattresses | Mattresses for beds | | | |
| HVAC | | | | |
| Air-conditioning | A hybrid central Air-conditioning system with blower units in the Bedrooms, Home office, and Living / Dining area | | ● | ● |
| Mechanical Ventilation | Exhaust fan of GMC-Hitec or equivalent in all bathrooms | | | ● |
| SPECIAL FEATURES | | | | |
| Feature Wall | Kota stone butch work or equivalent in Living | | | ● |
| LANDSCAPING | | | | |
| Soil | Good quality red soil and sand mixture with manure as the base layer for landscaping | ● | ● | ● |
| Irrigation | Sprinklers and a drip irrigation system for landscaped areas | ● | ● | ● |
| Soft Landscaping | Landscaped garden areas. Expensive exotic plants provided only at additional cost | ● | ● | ● |

Notes:

The Specifications listed here apply only to the default layout of the Unit and may not apply to changes made to spaces within the Unit or any additional spaces created during the interior design journey. Our earnest endeavour is to use the same brands, products and materials as mentioned above. However, some situations compel us to change some items. Rest assured that all changes shall always be of an equivalent brand, product or material.

TotalEnvironment Homes

Come, discover our homes.

To book an exclusive tour of our
Experience Homes mail us at

discover@total-environment.com
www.total-environment.com



@TotalEnv



@total_environment



@Totalenv



Total Environment Building
Systems Pvt Ltd