

env1





Experience all the benefits of an independent home together with the safety and convenience of urban community living.

The C20 home is designed as a simple “L” in plan, with 4 such homes placed back to back, forming a “plus” shape in a block. This unique layout coupled with the large glass panels, offers clear unobstructed views of the outside, from every room and at the same time opening out onto a landscaped terrace garden placed inside the L. The gardens run in alternate directions on alternate floors, for the required natural light.

An entrance foyer leads to the living and dining space. The open kitchen and L shaped living dining space provides a sense of spaciousness, but is still intimately wrapped around the garden.

The children's bathroom doubles up as a powder room for guests. The kitchen opens out to a useful utility space and a generous service platform beyond the utility space which can accommodate equipment such as air-conditioning and heat pumps.

These homes are available in our Green, Blue or Purple specifications.



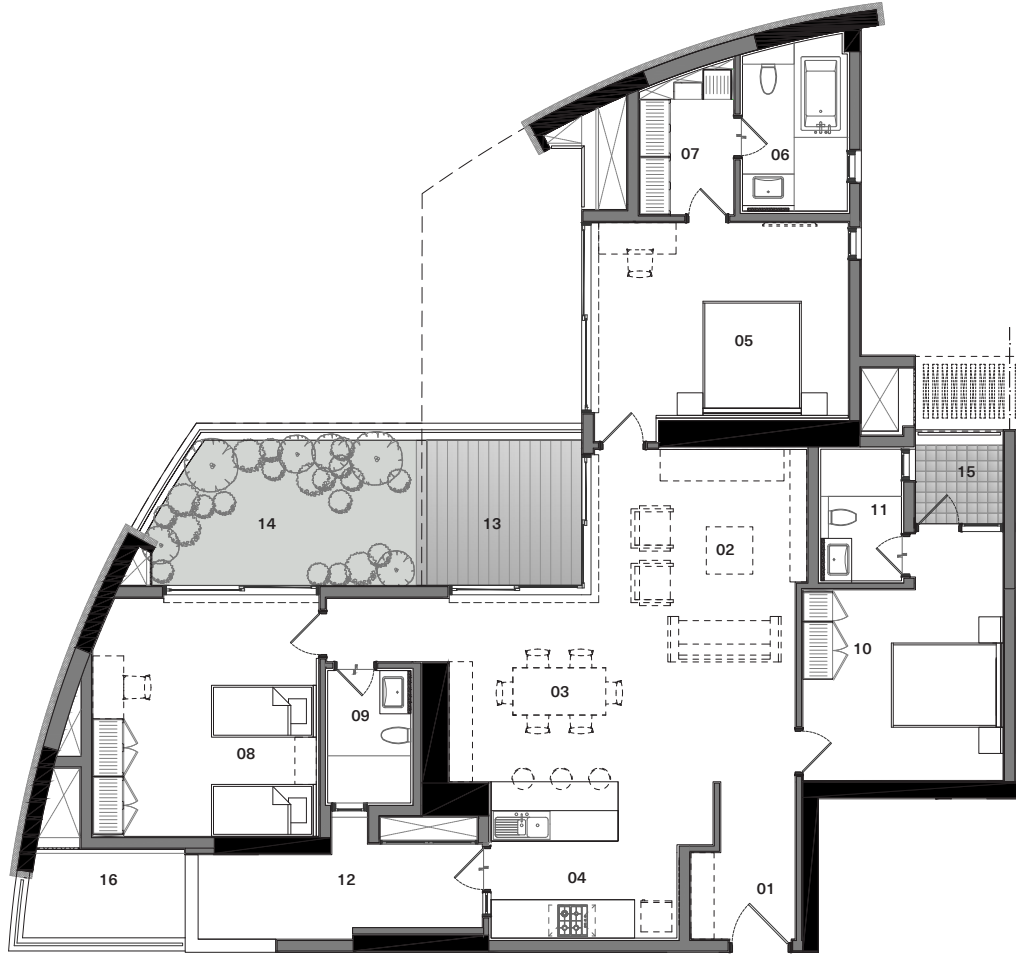


**Visualisation of the Master Bedroom**

*This image depicts the fully furnished product specification (different from green, blue and purple)*

# Floor Plans

## C20v1a



Carpet Area	1649 sq.ft.
Outdoor Spaces	269 sq.ft.
Built-up Area	2202 sq.ft.
Reference Saleable area	2753 sq.ft.

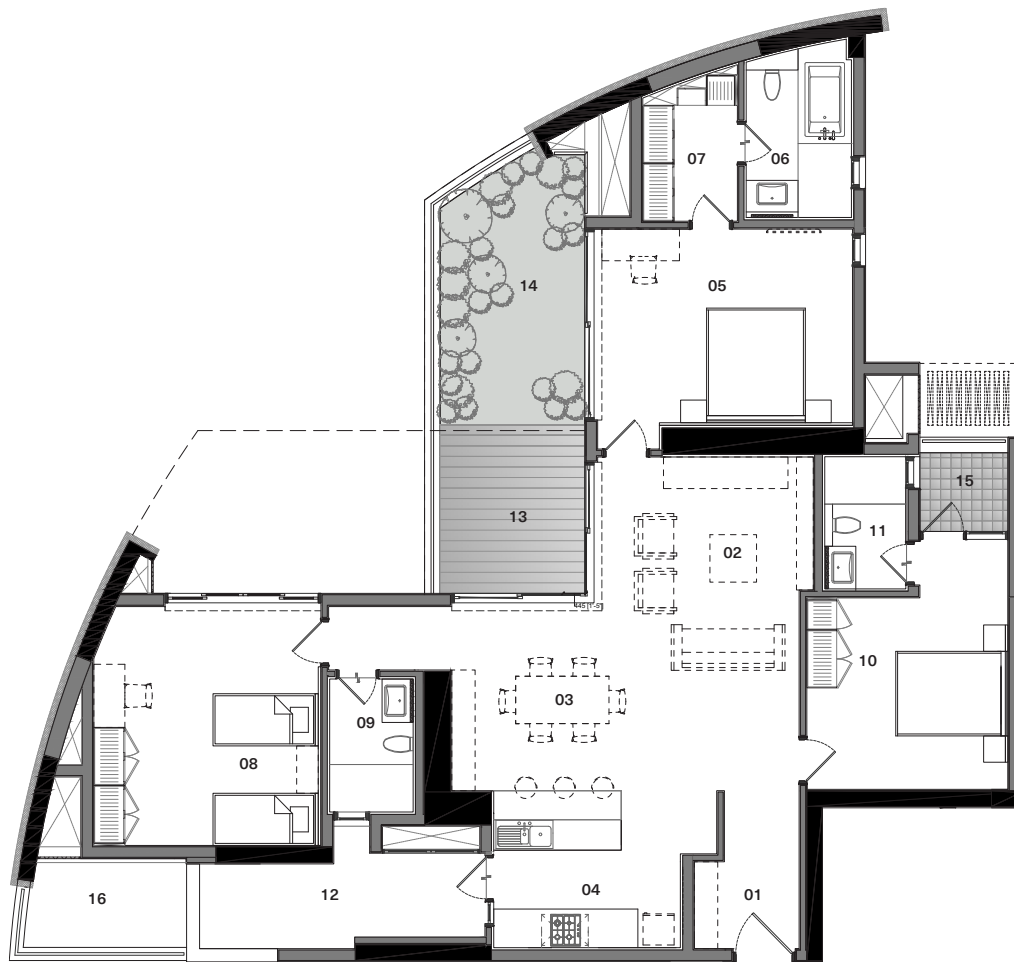
### Legend

- 01 Entrance - 6'8" x 9'10"
- 02 Living - 13'11" x 9'1"
- 03 Dining - 22'0" x 11'8"
- 04 Kitchen - 11'10" x 9'9"
- 05 Master Suite - 16'2" x 12'3"
- 06 Master Bathroom - 6'8" x 10'6"
- 07 Walk-in Wardrobe - 6'0" x 8'9"
- 08 Children's Bedroom - 14'4" x 15'1"
- 09 Children's Bathroom - 5'3" x 8'3"
- 10 Guest Bedroom - 12'9" x 12'0"
- 11 Guest Bathroom - 5'2" x 8'3"
- 12 Utility - 18'1" x 5'11"
- 13 Sit Out - 10'9" x 9'2"
- 14 Terrace Garden - 16'7" x 9'2"
- 15 Balcony - 5'7" x 4'6"
- 16 Service Platform - 10'4" x 5'6"

*Furniture items have been shown here for providing a reference only. Please refer the section on specifications to understand what is provided under various purchase options.*

# Floor Plans

## C20v1b



Carpet Area	1653 sq.ft.
Outdoor Spaces	274 sq.ft.
Built-up Area	2202 sq.ft.
Reference Saleable area	2753 sq.ft.

### Legend

- 01 Entrance - 6'8" x 9'10"
- 02 Living - 13'11" x 9'1"
- 03 Dining - 22'0" x 11'8"
- 04 Kitchen - 11'10" x 9'9"
- 05 Master Suite - 16'2" x 12'3"
- 06 Master Bathroom - 6'8" x 10'6"
- 07 Walk-in Wardrobe - 6'0" x 8'9"
- 08 Children's Bedroom - 14'4" x 15'1"
- 09 Children's Bathroom - 5'3" x 8'3"
- 10 Guest Bedroom - 12'9" x 12'0"
- 11 Guest Bathroom - 5'2" x 8'3"
- 12 Utility - 18'1" x 5'11"
- 13 Sit Out - 9'2" x 10'9"
- 14 Terrace Garden - 9'2" x 16'7"
- 15 Balcony - 5'7" x 4'6"
- 16 Service Platform - 10'4" x 5'6"

*Furniture items have been shown here for providing a reference only. Please refer the section on specifications to understand what is provided under various purchase options.*

# Floor Plans

## C20g1



Carpet Area	1677 sq.ft.
Outdoor Spaces	642 sq.ft.
Built-up Area	2487 sq.ft.
Reference Saleable area	3109 sq.ft.

### Legend

- 01 Entrance** - 6'8" x 9'10"
- 02 Living** - 13'11" x 9'1"
- 03 Dining** - 22'0" x 11'8"
- 04 Kitchen** - 11'10" x 9'9"
- 05 Master Suite** - 16'2" x 12'3"
- 06 Master Bathroom** - 6'8" x 10'6"
- 07 Walk-in Wardrobe** - 6'0" x 8'9"
- 08 Children's Bedroom** - 14'4" x 15'1"
- 09 Children's Bathroom** - 5'3" x 8'3"
- 10 Guest Bedroom** - 12'9" x 12'0"
- 11 Guest Bathroom** - 5'2" x 8'3"
- 12 Utility** - 18'1" x 5'11"
- 13 Service Platform** - 3'5" x 20'5"
- 14 Sit Out** - 10'9" x 10'9"
- 15 Terrace Garden** - 27'4" x 27'4"
- 16 Balcony** - 5'7" x 4'6"

*Furniture items have been shown here for providing a reference only. Please refer the section on specifications to understand what is provided under various purchase options.*



# Floor Plans

## C20g2



Carpet Area	1684 sq.ft.
Outdoor Spaces	762 sq.ft.
Built-up Area	2718 sq.ft.
Reference Saleable area	3398 sq.ft.

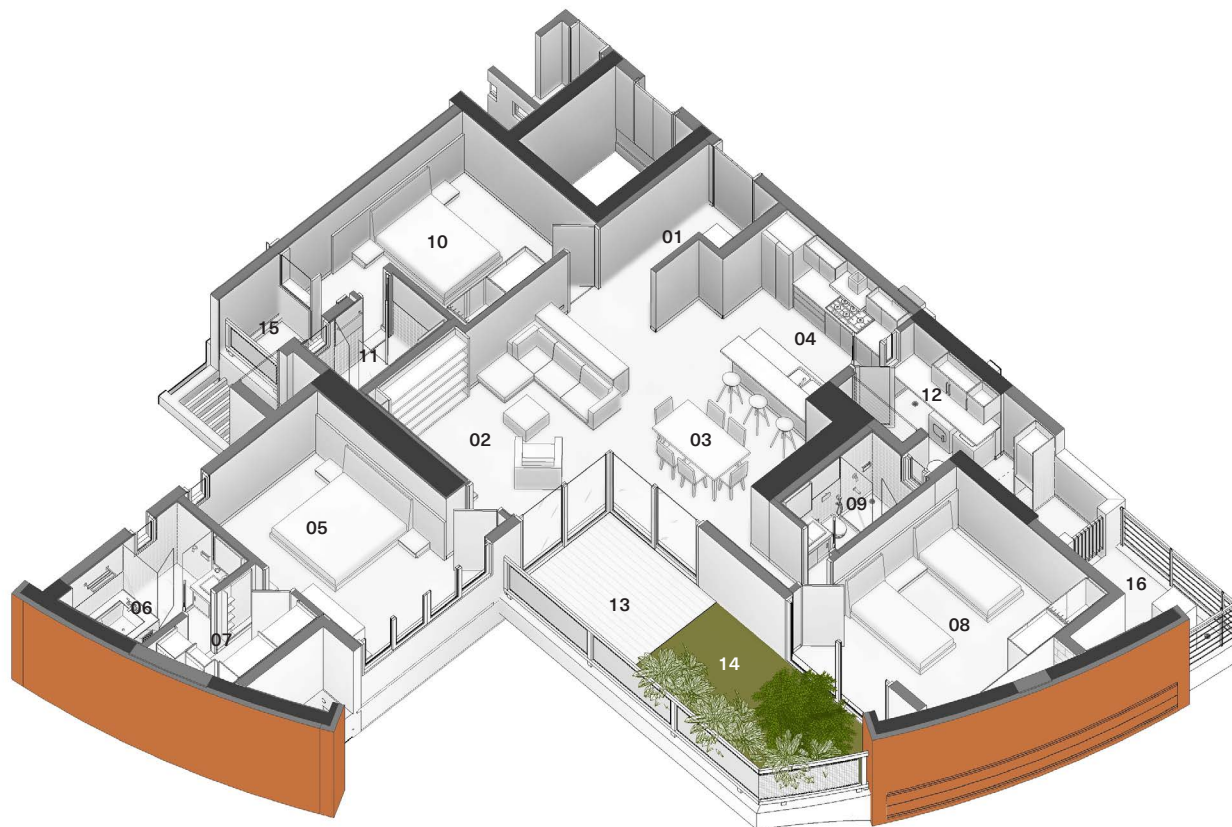
### Legend

- 01 Entrance - 6'8" x 9'10"
- 02 Living - 13'2" x 9'1"
- 03 Dining - 22'0" x 11'8"
- 04 Kitchen - 11'10" x 9'9"
- 05 Master Suite - 16'4" x 12'3"
- 06 Master Bathroom - 6'8" x 10'6"
- 07 Walk-in Wardrobe - 6'0" x 8'9"
- 08 Children's Bedroom - 14'4" x 15'1"
- 09 Children's Bathroom - 5'3" x 8'3"
- 10 Guest Bedroom - 12'9" x 12'0"
- 11 Guest Bathroom - 5'2" x 8'3"
- 12 Utility - 18'1" x 5'11"
- 13 Service Platform - 9'2" x 5'6"
- 14 Sit Out 01 - 8'5" x 27'11"
- 15 Terrace Garden 01 - 18'11" x 27'4"
- 16 Sit Out 02 - 5'7" x 4'6"
- 17 Terrace Garden 02 - 9'1" x 17'2"

*Furniture items have been shown here for providing a reference only. Please refer the section on specifications to understand what is provided under various purchase options.*

# Axonometric View

## C20v1a



Carpet Area	1649 sq.ft.
Outdoor Spaces	269 sq.ft.
Built-up Area	2202 sq.ft.
Reference Saleable area	2753 sq.ft.

### Legend

- 01 Entrance - 6'8" x 9'10"
- 02 Living - 13'11" x 9'1"
- 03 Dining - 22'0" x 11'8"
- 04 Kitchen - 11'10" x 9'9"
- 05 Master Suite - 16'2" x 12'3"
- 06 Master Bathroom - 6'8" x 10'6"
- 07 Walk-in Wardrobe - 6'0" x 8'9"
- 08 Children's Bedroom - 14'4" x 15'1"
- 09 Children's Bathroom - 5'3" x 8'3"
- 10 Guest Bedroom - 12'9" x 12'0"
- 11 Guest Bathroom - 5'2" x 8'3"
- 12 Utility - 18'1" x 5'11"
- 13 Sit Out - 10'9" x 9'2"
- 14 Terrace Garden - 16'7" x 9'2"
- 15 Balcony - 5'7" x 4'6"
- 16 Service Platform - 10'4" x 5'6"



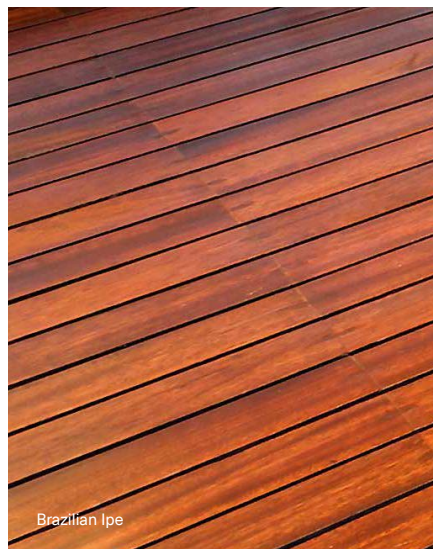






**Visualisation of the Living Room**

*This image depicts the fully furnished product specification (different from green, blue and purple)*



# Specifications

• GREEN • BLUE • PURPLE

## STRUCTURE

Shell	RCC frame structure with a height of 9'10" from slab top to slab top, except in the case of sloped or curved roofs	•	•	•
Masonry	High quality exposed brick masonry using specially procured high-strength terracotta wire-cut bricks and / or stone masonry for parts of the exterior with deep-set waterproof pointing. All other masonry in terracotta blocks, table moulded brick, Aerocon blocks or Concrete blocks with plaster	•	•	•

## FLOORING & DADO

Entrance Lobby, Living, Dining and Passage	Kota stone or equivalent finished with 8 coats polish	•		
	Beige coloured imported marble finished with 8 coats polish		•	•
Kitchen	Udaipur green marble flooring & Counter with glazed tile dado above the counter up to a height of 1'8"	•		
	Beige coloured imported marble finished with 8 coats polish on the floor. Granite counter with glazed tile dado above the counter up to a height of 1'8"		•	•
Utility / Laundry	Udaipur green marble flooring. No dado or counter	•	•	•
	Terracotta Tiles	•		
Deck / Outdoor	Tandoor Stone		•	
	Hardwood / Engineered Solid Wood, finished with oil			•
Master Bedroom	Kota stone or equivalent finished with 8 coats polish	•	•	
	White oak or equivalent hardwood flooring			•
Master Bathroom	Udaipur green marble or equivalent on the floor and counter, glazed tile dado on the walls up to 7' in shower area. Acrylic distemper or equivalent washable paint with skirting in dry area	•		
	Beige coloured imported marble with 8 coats polish on floor and counter, glazed tile dado on the walls up to 7' in shower area. Acrylic distemper or equivalent washable paint with skirting in dry area		•	•
Children's Bedroom	Kota stone or equivalent finished with 8 coats polish	•	•	•
	Udaipur green marble or equivalent on the floor and counter, glazed tile dado on the walls up to 7' in shower area. Acrylic distemper or equivalent washable paint with skirting in dry area	•		
Children's Bathroom	Indian Pink marble or equivalent on the floor and counter, glazed tile dado on the walls up to 7' in shower area. Acrylic distemper or equivalent washable paint with skirting in dry area		•	
	Beige coloured imported marble with 8 coats polish on floor and counter, glazed tile dado on the walls up to 7' in shower area. Acrylic distemper or equivalent washable paint with skirting in dry area			•

This reference images showcase options for the specific products / finishes marked on the image.





Bathtub



Wash basin



Bathroom Fittings

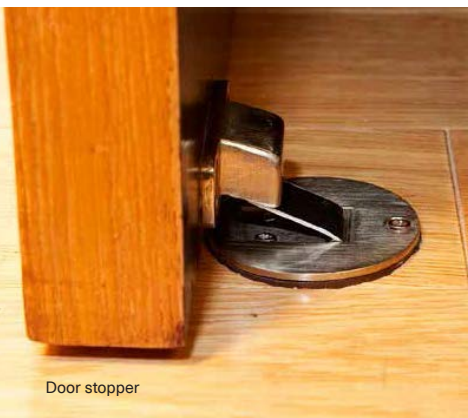
• GREEN • BLUE • PURPLE

Guest Bedroom	Kota stone or equivalent finished with 8 coats polish	•	•	•
Guest Bathroom	Udaipur green marble or equivalent on the floor and counter, glazed tile dado on the walls up to 7' in shower area. Acrylic distemper or equivalent washable paint with skirting in dry area	•	•	•
Service Platform	IPS Flooring	•	•	•
SANITARY AND PLUMBING				
Water Closet	Porcelain EWC of Kohler or equivalent in all bathrooms	•	•	•
Health Faucet	Health faucet of Jaquar or equivalent in all bathrooms	•	•	•
Wash Basin	Porcelain wash basin of Kohler or equivalent shall be provided in all bathrooms	•	•	•
Kitchen Sink	Single bowl stainless steel sink with drain board	•	•	•
Cockroach / Floor Trap	A detachable stainless steel cockroach trap with lid of Chilly or equivalent in all bathrooms and utility	•	•	•
Bathtub	1 Acrylic bathtub of Kohler or equivalent in the Master bathroom		•	•
Shower Area	Glass partition with door for the shower area in the Master & Children's bath			•
Overhead Showers	3" dia shower head of Grohe or equivalent in all bathrooms	•	•	•
	One Rain shower of Grohe or equivalent in the Master bath			•
Hand Shower	Hand shower of Grohe or equivalent in the Master bathroom			•
Spout	CP finish of Grohe or equivalent in shower area of all bathrooms	•	•	•
Basin Mixer	CP finish of Grohe or equivalent in all bathrooms	•	•	•
Bathtub filler with hand shower	CP finish of Grohe or equivalent in the Master bathroom		•	•
Bath Accessories	Towel rings, toilet paper holders, towel rod and soap dish in Master, Children's and Guest Bathrooms - all of Grohe or equivalent		•	•
Washing Machine Point	One cold water inlet and drainage outlet for a washing machine in the utility	•	•	•

This reference images showcase options for the specific products / finishes marked on the image.



Wooden fenestration



Door stopper



French door

• GREEN • BLUE • PURPLE

RO Point	One cold water inlet for a RO unit in the kitchen	•	•	•
Plumbing	Internal water supply lines & drainage lines in uPVC pipes. Hot water lines in cPVC pipes. Sewage lines in PVC pipes. Provision for centralised hot water connection to the shower and wash basin in each bathroom and to the sink in the kitchen	•	•	•
<b>ELECTRICAL</b>				
Wiring	All wiring of Anchor or equivalent, concealed in PVC conduit pipes	•	•	•
Switches & Sockets	All switches of Crabtree or equivalent	•	•	•
Apart from the basic light and fan controls, the following number of sockets in various rooms:				
Living / Dining	3 nos. - 5 amp switch & socket	•	•	•
Kitchen	3 nos. - 5 amp switch & socket, 4 nos. - 15 amp switch and socket	•	•	
	3 nos. - 5 amp switch & socket, 5 nos. - 15 amp switch and socket			•
Utility	1 no - 5 amp switch & socket, 1 no. - 15 amp switch and socket	•	•	•
Master Bedroom	2 nos. - 5 amp switch & socket	•	•	
	4 nos. - 5 amp switch & socket			•
Other Bedrooms	2 nos. - 5 amp switch & socket	•	•	•
Bathrooms	1 no - 5 amp switch & socket	•	•	•
Telephone	1 Telephone Point each in living and master bedroom	•	•	•
Entertainment	1 Television Point in living	•	•	•
Light Fixtures	Light fixtures in the home			
Power & Back-up	Power connection of 3 KVA with back-up from Diesel Generator	•		
	Power connection of 5 KVA with back-up from Diesel Generator		•	•

This reference images showcase options for the specific products / finishes marked on the image.



Switchboard



Footlight



Cabinetry light

• GREEN • BLUE • PURPLE

## FENESTRATION

Frames & Shutters	Door and Window frames are in Engineered Wood or finger-jointed Glulam wood. All flush door shutters in natural wood veneer with core of block board. All bathroom windows, and external utility fenestration in aluminium extruded frames with clear or frosted glass	•	•	•
Mosquito Screens	Mosquito screens for all the External Windows and French Windows except for bathroom windows			•
Window Grills	No window grills permitted for the French Windows. Grills provided only for windows where there is a sheer drop [atleast two floors]. No grills for bathroom windows	•	•	•
Hardware	All hardware in brush stainless steel finished	•	•	•
	Main door with a night latch of Godrej or equivalent brand, Other doors with tower bolts and a mortise lock with handle or tubular/ cylindrical lock. All outward casement glass window fitted with SS friction stays. Magnetic/ concealed door stoppers for the Main door and Bed room doors. French windows with lift and slide system, Sliding window with multipoint lock/star lock	•	•	•

## PAINT

Paint	No external paint over exposed brick or stone masonry. Cement based paint for other areas. Any steel railings etc. with a zinc-chromate primer and synthetic enamel paint	•	•	•
	All internal paint in Acrylic Distemper	•	•	•

## ELECTRO-DOMESTIC EQUIPMENT

Central Vacuum	Central vacuum system with vacuum points accessible from Living / Dining, Bedrooms, Kitchen			•
Hob	4-burner stainless steel finish cooking hob in the Kitchen		•	•
Chimney	Ductable electric chimney stainless steel finish with anodized aluminium filters in the Kitchen		•	•
Dishwasher	Dishwasher of Siemens or equivalent in the Kitchen		•	•
Microwave	Microwave of Siemens or equivalent in the Kitchen			•
Oven	Oven of Siemens or equivalent in the Kitchen			•
Refrigerator	Refrigerator in Kitchen			
Water Purifier	RO unit		•	•

This reference images showcase options for the specific products / finishes marked on the image.





Motion sensor



Biometric lock



Panic button



Double bed and cabinetry



Electric chimney

• GREEN • BLUE • PURPLE

Heat Pump Centralized Heat Pump of 150 L capacity

• •

## HOME AUTOMATION

Bio-metric main door lock with additional control from smart phone app

•

Colour door camera with call bell facility outside the main door

•

Surface mounted siren and auto dialler [1 No.]

•

## Security / Safety

Panic buttons [4 Nos.] at entrance lobby and bathrooms to raise alarm in case of emergency

•

Pet immune motion sensors [2 Nos.] in living and garden area for detecting intrusions

•

Magnetic sensors in all windows, French windows and main door

•

Gas leak detector and heat detector in the kitchen

•

## Entertainment

Mood Lighting and Media Integration

## Comfort / Convenience

AC Integration

Curtain Motor with remote control for curtains in the living area

## Green Controls

Occupancy sensors in master bathroom, children's bathroom and guest bathrooms

•

## CABINETRY & FURNITURE

## Living & Dining

Console unit with white ash finish in dining area. No crockery unit

•

## Kitchen

Floor & wall mounted cabinets in handle theme with oak finish veneer

• •

## Master Bedroom

King size bed with head board and bed side tables in white ash finish, 2.5 module walk-in wardrobe without shutters in laminate finish

•

King size bed with head board, bed side tables and study ledge in white ash finish, 2.5 module walk-in wardrobe without shutters in laminate finish

•

## Master Bathroom

Wall mounted mirror with wooden frame in teak finish

•

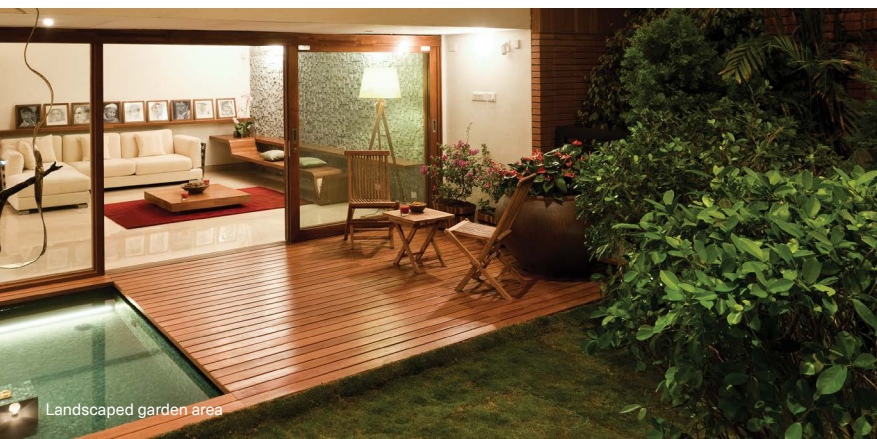
Under counter cabinet in teak finish

•

This reference images showcase options for the specific products / finishes marked on the image.



Double bed and cabinetry



Landscaped garden area

**Notes:**  
The Specifications listed here are applicable only for the default layout of the Unit and may not apply to changes made to spaces within the Unit or any additional spaces created during the interior design journey. It is our earnest endeavour to use the same brands, products and materials as mentioned above, however, there are situations that compel us to change some items. Rest assured that all changes shall always be of an equivalent brand, product or material.

*This reference images showcase options for the specific products / finishes marked on the image.*

• GREEN • BLUE • PURPLE

Children's Bedroom	Two single beds with head board and a bed side table, 2 module wardrobe with plain veneer shutters in white ash finish	•		
	Two single beds with head board and a bed side table, study ledge, 2 module wardrobe with plain veneer shutters in white ash finish			•
Children's Bathroom	Wall mounted mirror with wooden frame in teak finish			•
	Under counter cabinet in teak finish			•
Guest Bedroom	Queen size bed with head board and bed side tables, 1.5 module wardrobe with plain veneer shutters in white ash finish	•		•
Guest Bathroom	Wall mounted mirror with wooden frame in teak finish			•
No cabinetry shall be provided in any other spaces				
Basic Materials	All woodwork and modular units in termite resistant good quality plywood or MDF panels in natural veneer or laminate	•		•
Brand	All Woodwork, unless specifically mentioned otherwise, shall be made at our in-house production facility from our proprietary furniture design line.	•		•
Hardware	All hardware in stainless steel brush finished of Hettich or equivalent	•		•
Mattresses	Mattresses for beds			
HVAC				
Air-conditioning	A hybrid central Air-conditioning system with blower units in the Bedrooms, and Living / Dining area	•		•
Mechanical Ventilation	Exhaust fan of GMC-Hitec or equivalent in all bathrooms			•
LANDSCAPING				
Soil	Good quality red soil and sand mixture with manure as the base layer for landscaping	•	•	•
Irrigation	Sprinklers and a drip irrigation system for landscaped areas	•	•	•
Soft Landscaping	Landscaped garden areas. Expensive exotic plants provided only at additional cost	•	•	•





Photograph of a Circular Tower





**Come, discover our homes.**

To book an exclusive tour of our Experience Homes mail us at [discover@total-environment.com](mailto:discover@total-environment.com)

[www.total-environment.com](http://www.total-environment.com)

**Total**Environment  
Homes